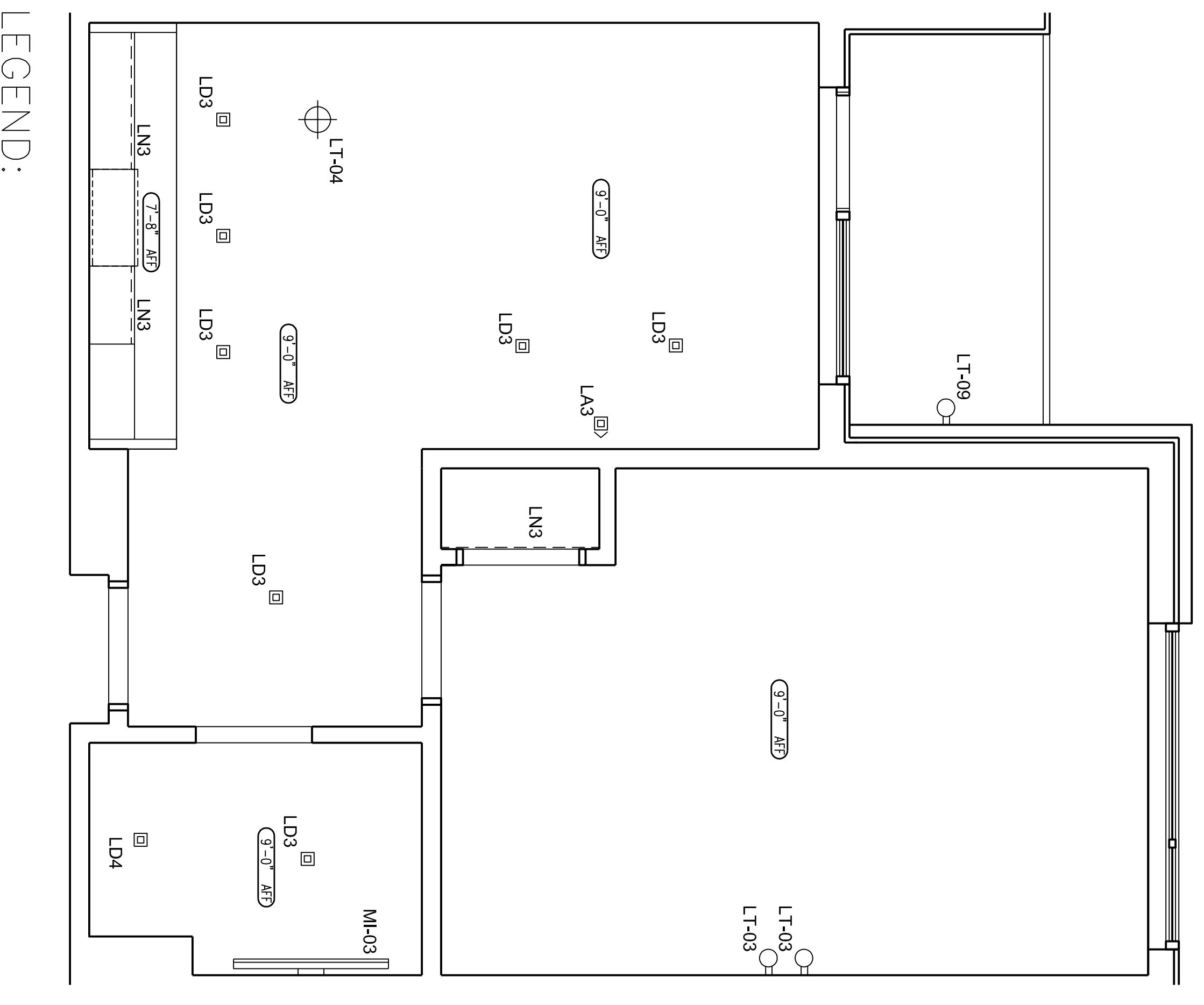


GUEST ROOM ELEVATIONS

SCALE
3/8"=1'-0"
2

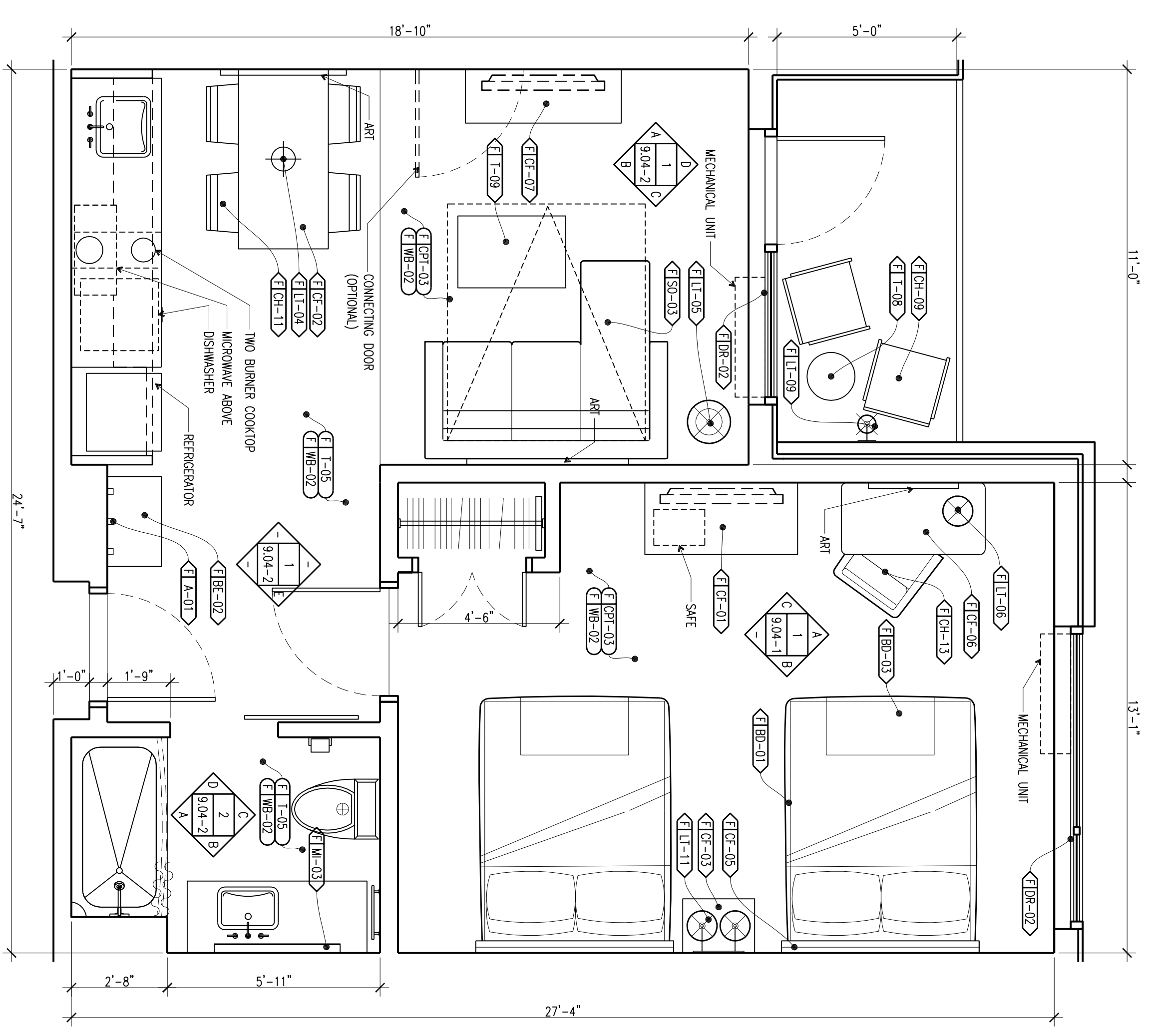


LEGEND:

- LA3 LED ADJUSTABLE ACCENT LIGHTS
- LD3 LED RECESSED DOWNLIGHT
- LD4 LED RECESSED DOWNLIGHT - SHOWER
- LNS3 LED LINEAR SURFACE MOUNTED SHELF LIGHT
- LT-03 DECORATIVE WALL SCOINCE
- LT-04 DECORATIVE PENDANT
- LT-09 DECORATIVE WALL SCOINCE
- MI-03 ILLUMINATED MIRROR

GUEST ROOM REFLECTED CEILING PLAN

SCALE
3/8"=1'-0"
2



GUEST ROOM PLAN

SCALE
3/8"=1'-0"
1

NOT FOR CONSTRUCTION

SHEET DESCRIPTION:
Q/R EXECUTIVE RESIDENCY
PLANS AND ELEVATIONS

DATE: JANUARY 2016

PROJECT NAME:
BEST WESTERN
EXECUTIVE
RESIDENCY
PROTOTYPE

SHEET NUMBER:
DD9_04-1

RESPONSIBILITIES:
YOU EXPRESSLY UNDERSTAND AND AGREE THAT YOUR USE OF AND/OR SPECIFICATIONS PROVIDED BY BEST WESTERN INTERNATIONAL, INC. ("BWI") IS AT YOUR SOLE RISK AND IS MADE AVAILABLE ON AN "AS IS" AND "AS AVAILABLE" BASIS. YOU HEREBY REPRESENT, WARRANTS, OR GUARANTEES WITH REGARD TO THE APPROPRIATENESS, ACCURACY, SUFFICIENCY, CORRECTNESS, RELIABILITY, VALUE, COMPLETENESS, OR SPECIFICATIONS AND/OR RELATED CONTENT, INCLUDING WITHOUT LIMITATION DISABILITIES ACT FEDERAL STATE OR CODE OR ASSOCIATION FOR ANY SPECIFIC OR INTENDED PURPOSE. BWI EXPRESSLY DISCLAIMS ALL WARRANTIES OF ANY KIND, WHETHER EXPRESS OR IMPLIED, INCLUDING BUT NOT LIMITED TO THE IMPLIED WARRANTIES OF MERCHANTABILITY, FITNESS FOR A PARTICULAR PURPOSE AND NON-INFRINGEMENT.

NO AND NO PART THEREOF SHALL BE LIABLE FOR ANY DIRECT, INDIRECT, PUNITIVE, INCIDENTAL, SPECIAL, CONSEQUENTIAL DAMAGES OR ANY DAMAGES WHATSOEVER, INCLUDING DAMAGES FOR LOSS OF USE, DATA, OR PROFITS, ARISING OUT OF OR IN ANY WAY CONNECTED WITH THE USE OR PERFORMANCE OF ANY BWI PROVIDED SOFTWARE, INCLUDING BUT NOT LIMITED TO THE BWI PLANS OR SPECIFICATIONS, IN WHOLE OR IN PART, WHETHER BASED ON CONTRACT, TORT, NEGLIGENCE, STRICT LIABILITY OR OTHERWISE, EVEN IF YOU HAVE BEEN ADVISED OF THE POSSIBILITY OF SUCH DAMAGES. ALL USE OF THE PLANS AND/OR SPECIFICATIONS IS DONE AT YOUR OWN DISCRETION AND RISK AND YOU WILL BE SOLELY RESPONSIBLE FOR ANY DAMAGES THAT RESULT THEREFROM.

IF YOU ARE DISSATISFIED WITH ANY PORTION OF THE BWI PLANS AND/OR SPECIFICATIONS, OR WITH ANY OF THESE EXCLUSIONS, PLEASE CONTACT US IMMEDIATELY BY E-MAIL OR BY PHONE. WE WILL BE RESPONSIBLE FOR CORRECTING THE DEFICIENCY AND DETERMINING THE ADEQUACY AND SPECIFICATION FOR YOUR PARTICULAR NEEDS. YOU ARE HEREBY ENCOURAGED BY BWI TO CONSULT WITH THE APPROPRIATE PROFESSIONAL ADVISORS OF YOUR CHOICE TO DETERMINE THE APPLICABLE LAWS FOR ANY SUCH PLANS AND/OR SPECIFICATIONS.