



A PROVEN PERFORMER IN EVERY LOCATION.

MONTGOMERY, AL



A Top 5 Ranked Loyalty Program **7x**

FAST COMPANY #6 The World's Most Innovative Companies



#1 Midscale Hotel Brand

A Dependable Product. A Trusted Brand.



BEST WESTERN HOTEL AMENITIES:

- Complimentary breakfast to start the day
- Free high-speed Wi-Fi
- Free local calls with long-distance access
- Productivity-focused business center
- Guest computer and printer in the lobby
- Modern fitness center



HOTEL PERFORMANCE

NORTH AMERICA*:

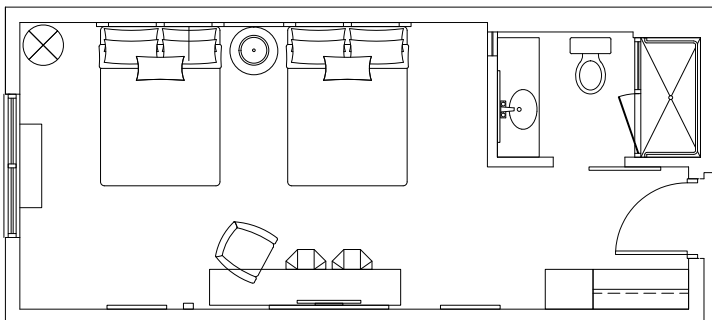
Average Occupancy Rate: 64.8%
Average Daily Rate: \$100.84
Average RevPAR: \$65.34
Average RevPAR Index: 123.6
Loyalty Program Contribution: 48.4%
Brand Contribution: 72.4%



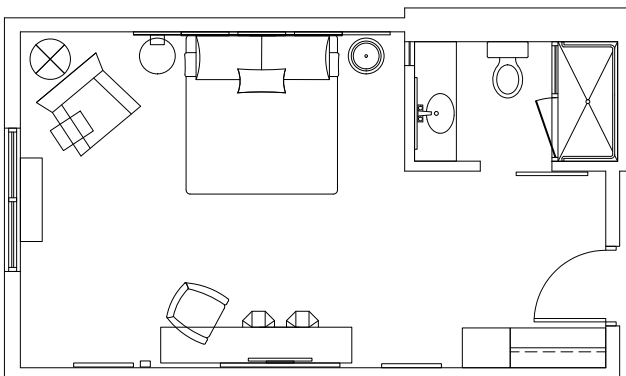
HOTEL DISTRIBUTION**

	North America	Global
Active:	1,099	1,982
Pipeline:	63	162

DOUBLE QUEEN: 366 sq. ft.



KING: 323 sq. ft.



BUILDING DETAILS

Building Total: 43,698 sq. ft.
Footprint Total: 14,904 sq. ft.
Lot Total: 1.99 acres
Total Rooms: 82

*FY 11.2018.
 **Numbers are approximate, may fluctuate and include hotels currently in the development pipeline.