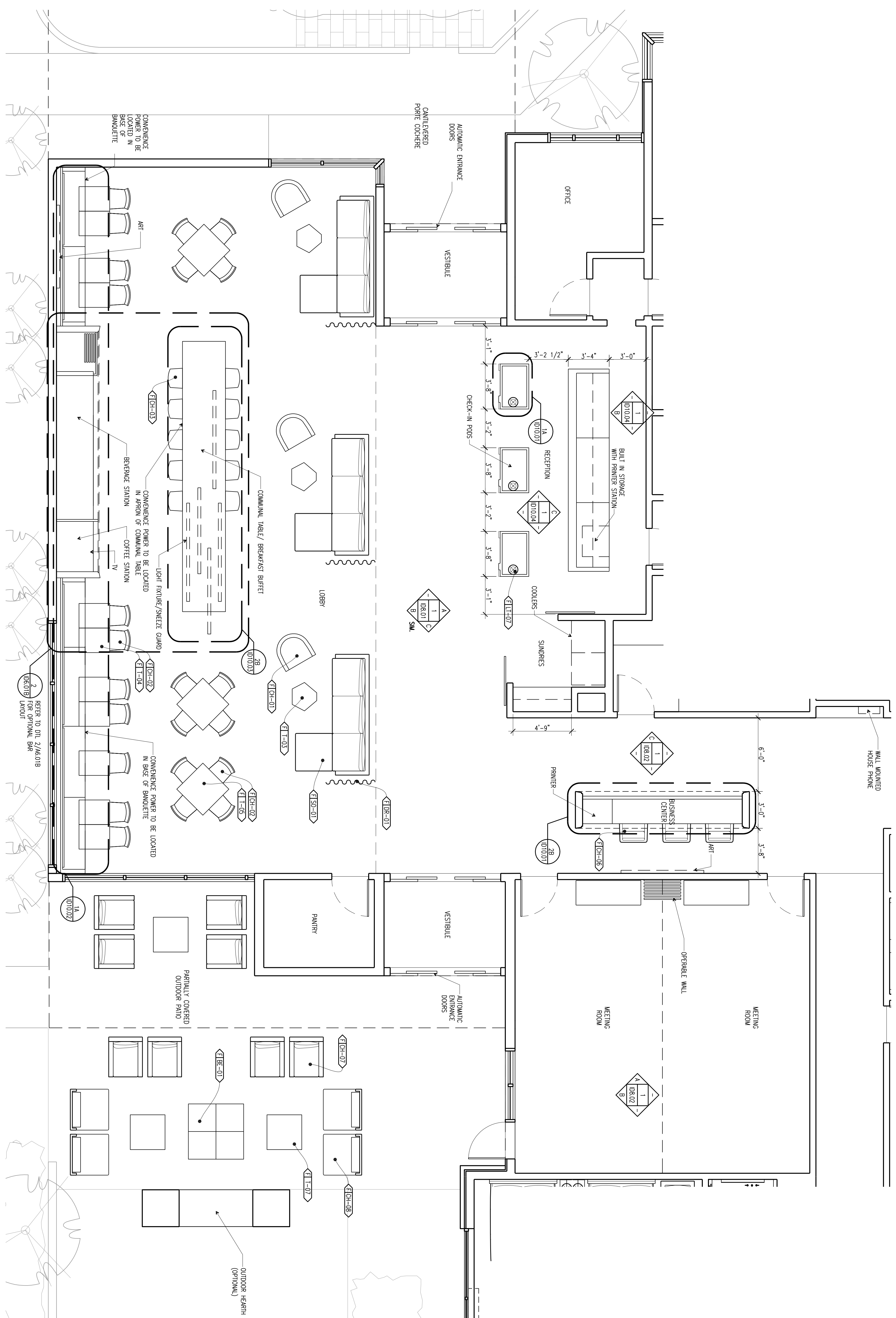
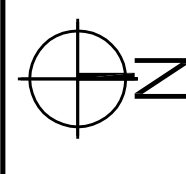


1 LOBBY / RECEPTION
1/4" = 1'-0"



NOT FOR CONSTRUCTION

SHEET NUMBER:
IDG. 01A

PROJECT NAME:
BEST WESTERN
EXECUTIVE
RESIDENCY
PROTOTYPE

SHEET DESCRIPTION:
ENLARGED PLAN - RECEPTION,
LOBBY, AND MEETING ROOMS

DATE:
JANUARY 2016

RESPONSIBILITIES:
YOU EXPRESS, UNDERSTAND AND AGREE THAT YOUR USE OF AND RELIANCE ON THE INFORMATION PROVIDED BY BEST WESTERN INTERNATIONAL, INC. ("BWI") IS AT YOUR SOLE RISK AND IS MADE AVAILABLE ON AN "AS IS" AND "AS AVAILABLE" BASIS. YOU RELEASE, WARRANT, DEFEND, HOLD HARMLESS, AND GUARANTEE WITH REGARD TO THE APPROPRIATENESS, ACCURACY, SUFFICIENCY, CORRECTNESS, TIMELINESS, COMPLETENESS, OR SPECIFICATIONS AND/OR RELATED CONTENT, INCLUDING WITHOUT LIMITATION DISPARITIES WITH THE AMERICANS WITH DISABILITIES ACT, FEDERAL STATE OR CODE OR ASSOCIATION FOR ANY SPECIFIC OR INTENDED PURPOSE. BWI EXPRESSLY DISCLAIMS ALL WARRANTIES OF ANY KIND, WHETHER EXPRESS OR IMPLIED, INCLUDING WARRANTIES OF MERCHANTABILITY, FITNESS FOR A PARTICULAR PURPOSE AND NON-INFRINGEMENT.

NO AND NO PART SHALL BE LIABLE FOR ANY DIRECT, INDIRECT, PUNITIVE DAMAGES OR ANY DAMAGES WHATSOEVER. LIMITATION DAMAGES FOR LOSS OF USE, DATA, OR PROFITS ARISING OUT OF OR IN ANY WAY CONNECTED WITH THE USE OR PERFORMANCE OF ANY BWM PROVIDED OR NOT PROVIDED OUT OF THE USE OF THE BWM PLANS OR SPECIFICATIONS, IN WHOLE OR IN PART, WHETHER BASED ON CONTRACT, TORT, NEGLIGENCE, STRICT LIABILITY OR OTHERWISE, EVEN IF BWM HAS BEEN ADVISED OF THE POSSIBILITY OF SUCH DAMAGES. ALL USE OF THE PLANS AND/OR SPECIFICATIONS IS DONE AT YOUR OWN DISCRETION AND RISK AND YOU WILL BE SOLELY RESPONSIBLE FOR ANY DAMAGES THAT RESULT THEREFROM.

IF YOU ARE DISSATISFIED WITH ANY PORTION OF THE BWM PLANS AND/OR SPECIFICATIONS, OR WITH ANY OF THESE EXCLUSIVE REMEDIES, TO DISCONTINUE USING SUCH PLANS AND SPECIFICATIONS, YOU ARE SOLELY RESPONSIBLE FOR DETERMINING THE ADEQUACY AND SPECIFICATION FOR YOUR PARTICULAR NEEDS. YOU ARE HEREBY ENCOURAGED BY BWI TO CONSULT WITH THE APPROPRIATE PROFESSIONAL ADVISORS OF YOUR OWN CHOICE TO DETERMINE THE ADEQUACY AND APPLICABLE LAWS FOR ANY SUCH PLANS AND/OR SPECIFICATIONS.