

RESPONSIBILITIES:

YOU EXPRESS, UNDERSTAND AND AGREE THAT YOUR USE OF AND RELIANCE ON SPECIFICATIONS PROVIDED BY BEST WESTERN INTERNATIONAL, INC. ("BWI") IS AT YOUR SOLE RISK AND IS MADE AVAILABLE ON AN "AS IS" AND "AS AVAILABLE" BASIS. YOU HEREBY RELEASE, WARRANTIES, OR GUARANTEES WITH REGARD TO THE APPROPRIATENESS, ACCURACY, SUFFICIENCY, CORRECTNESS, COMPLETENESS, OR TIMELINESS OF THE SPECIFICATIONS AND/OR RELATED CONTENT, INCLUDING WITHOUT LIMITATION CONSULTANCE WITH THE AMERICANS WITH DISABILITIES ACT, FEDERAL, STATE OR LOCAL BUILDING CODES, OR ASSOCIATION FOR AN SPECIFIC OR INTENDED PURPOSE. BWI EXPRESSLY DISCLAIMS ALL WARRANTIES OF ANY KIND, WHETHER EXPRESS OR IMPLIED, INCLUDING MERCHANTABILITY, FITNESS FOR A PARTICULAR PURPOSE AND NON-INFRINGEMENT.

NO AND GREAT SMALL BE LIABLE FOR ANY DIRECT, INDIRECT, PUNITIVE, INCIDENTAL, SPECIAL, CONSEQUENTIAL DAMAGES OR ANY DAMAGES WHATSOEVER. LIMITATION DAMAGES FOR LOSS OF USE, DATA OR PROFITS ARISING OUT OF OR IN ANY WAY CONNECTED WITH THE USE OR PERFORMANCE OF ANY BIM PROVIDED. BIMS ARE ISSUED OUT OF THE USE OF THE BIM PLANS OR SPECIFICATIONS, IN WHOLE OR IN PART, WHETHER BASED ON CONTRACT, TORT, NEGLIGENCE, STRICT LIABILITY OR OTHERWISE. EVEN IF THIS BIMS ARE ISSUED OUT OF THE USE OF THE BIM PLANS OR SPECIFICATIONS, YOU WILL BE SOLELY RESPONSIBLE FOR ANY DAMAGES THAT RESULTS THEREFROM. IF YOU ARE DISSATISFIED WITH ANY PORTION OF THE BIM PLANS AND/OR SPECIFICATIONS, OR WITH ANY OF THESE SPECIFICATIONS, YOU MAY DISCONTINUE USING SUCH PLANS AND SPECIFICATIONS. YOU ARE SOLELY RESPONSIBLE FOR DETERMINING THE ADEQUACY AND SPECIFICATION FOR YOUR PARTICULAR NEEDS. YOU ARE HEREBY ENCOURAGED BY BWI TO CONSULT WITH THE APPROPRIATE PROFESSIONAL ADVISORS AND ENGINEERS AND TO COMPLY WITH APPLICABLE LAWS FOR ANY SUCH PLANS) AND/OR SPECIFICATIONS.)

SHEET DESCRIPTION:  
NORTH AND EAST ELEVATIONS

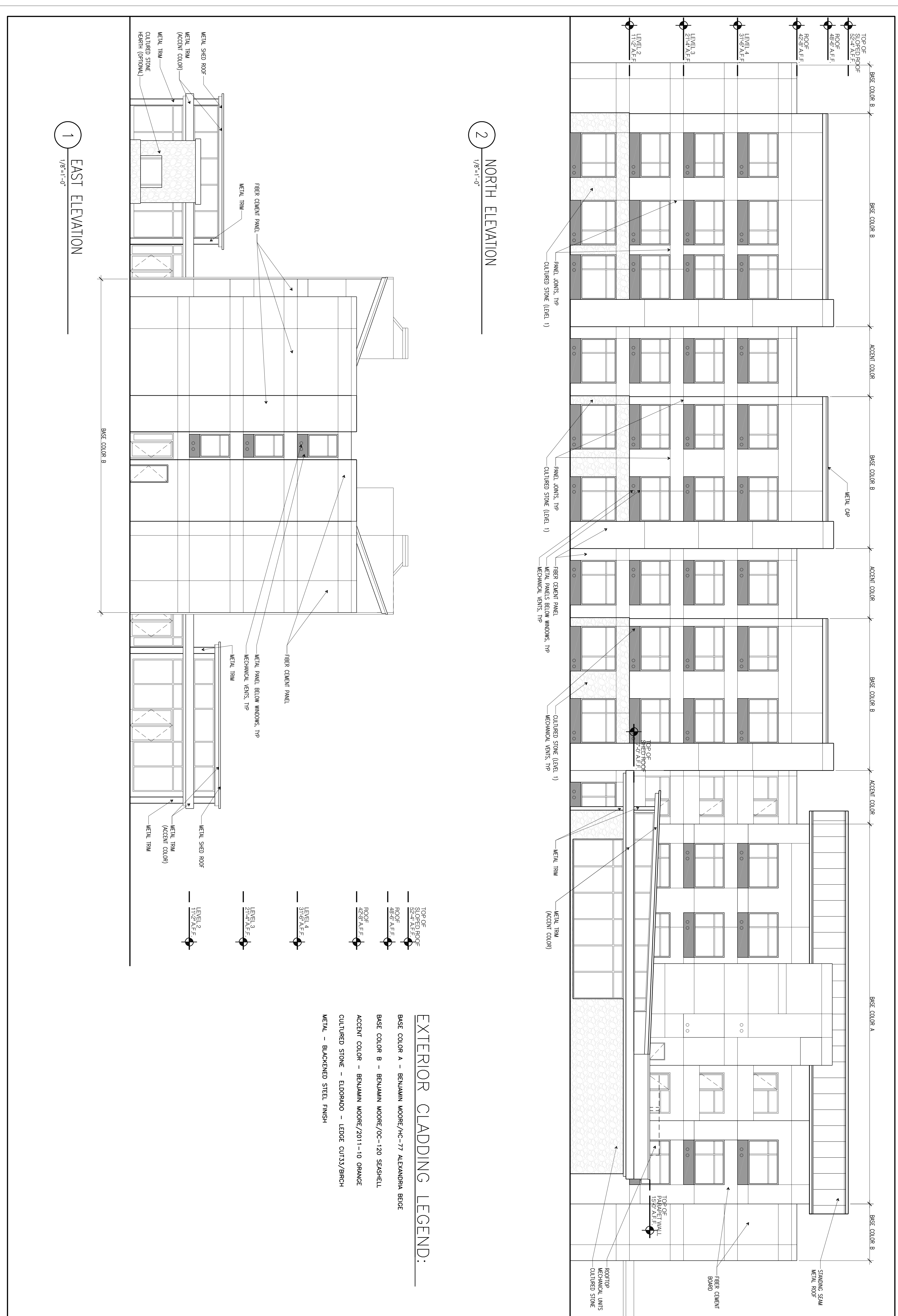
DATE: JANUARY 2016  
04-18-2016 BSA 1  
PROJECT NAME:

BEST WESTERN  
EXECUTIVE  
RESIDENCY  
PROTOTYPE

NOT FOR CONSTRUCTION  
SHEET NUMBER:  
A3.02

**EXTERIOR CLADDING LEGEND:**

- BASE COLOR A - BENJAMIN MOORE/HC-77 ALEXANDRA BEIGE
- BASE COLOR B - BENJAMIN MOORE/OC-120 SEASHELL
- ACCENT COLOR - BENJAMIN MOORE/2011-10 ORANGE
- CULTURED STONE - ELDORADO - LEDE CUT33/BIRCH
- METAL - BLACKENED STEEL FINISH



2 NORTH ELEVATION  
1/8"=1'-0"

1 EAST ELEVATION  
1/8"=1'-0"