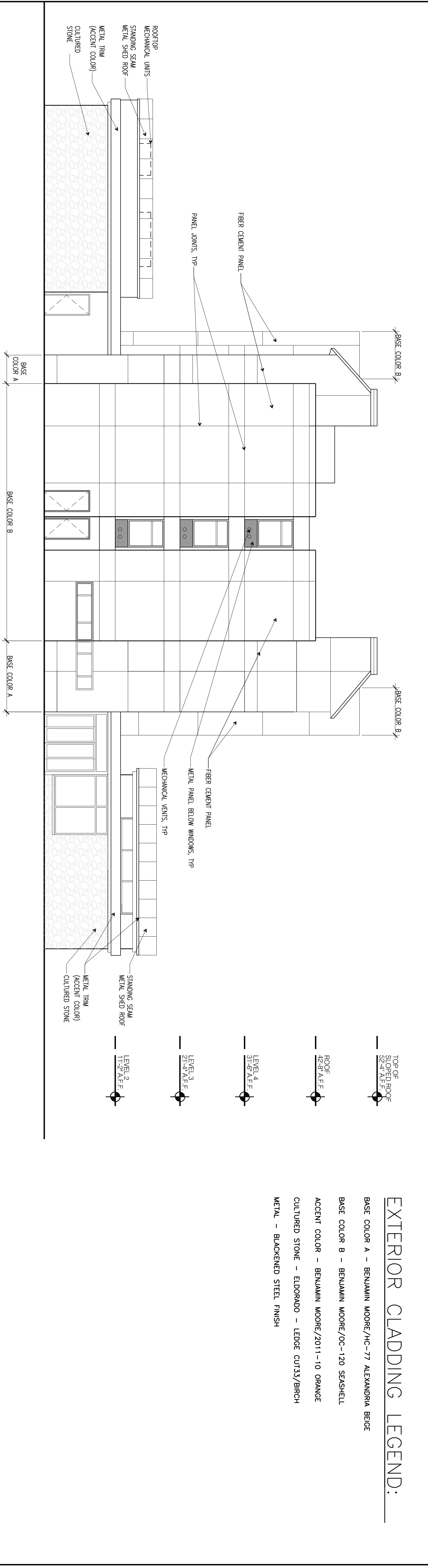


2 SOUTH ELEVATION
1/8"=1'-0"



1 WEST ELEVATION
1/8"=1'-0"

EXTERIOR CLADDING LEGEND:

- BASE COLOR A - BENJAMIN MOORE/HC-77 ALEXANDRA BEIGE
- BASE COLOR B - BENJAMIN MOORE/OC-120 SEASHELL
- ACCENT COLOR - BENJAMIN MOORE/2011-10 ORANGE
- CULTURED STONE - ELDORADO - LEDEE CUT33/BIRCH
- METAL - BLACKENED STEEL FINISH

RESPONSIBILITIES:
YOU EXPRESSLY UNDERSTAND AND AGREE THAT YOUR USE OF AND RELIANCE ON ANY INFORMATION PROVIDED BY BEST WESTERN INTERNATIONAL, INC. ("BWI") IS AVAILABLE ON AN "AS IS" AND "AS AVAILABLE" BASIS. BEST WESTERN INTERNATIONAL, INC. MAKES NO REPRESENTATIONS, WARRANTIES, OR GUARANTEES WITH REGARD TO THE ACCURACY, COMPLETENESS, OR MERCHANTABILITY OF ANY INFORMATION PROVIDED BY IT. YOU AGREE TO HOLD BEST WESTERN INTERNATIONAL, INC. HARMLESS FROM AND AGAINST ALL CLAIMS, DAMAGES, LOSSES, AND EXPENSES, INCLUDING REASONABLE ATTORNEY'S FEES, ARISING OUT OF OR IN CONNECTION WITH YOUR USE OF ANY INFORMATION PROVIDED BY IT. THIS AGREEMENT SHALL BE GOVERNED BY THE APPLICABLE LAWS OF THE STATE OF ARIZONA.

YOU EXPRESSLY UNDERSTAND AND AGREE THAT YOUR USE OF AND RELIANCE ON ANY INFORMATION PROVIDED BY BEST WESTERN INTERNATIONAL, INC. ("BWI") IS AVAILABLE ON AN "AS IS" AND "AS AVAILABLE" BASIS. BEST WESTERN INTERNATIONAL, INC. MAKES NO REPRESENTATIONS, WARRANTIES, OR GUARANTEES WITH REGARD TO THE ACCURACY, COMPLETENESS, OR MERCHANTABILITY OF ANY INFORMATION PROVIDED BY IT. YOU AGREE TO HOLD BEST WESTERN INTERNATIONAL, INC. HARMLESS FROM AND AGAINST ALL CLAIMS, DAMAGES, LOSSES, AND EXPENSES, INCLUDING REASONABLE ATTORNEY'S FEES, ARISING OUT OF OR IN CONNECTION WITH YOUR USE OF ANY INFORMATION PROVIDED BY IT. THIS AGREEMENT SHALL BE GOVERNED BY THE APPLICABLE LAWS OF THE STATE OF ARIZONA.

DATE: JANUARY 2016
01-25-2016 (REV. 1)

PROJECT NAME: BEST WESTERN EXECUTIVE RESIDENCY PROTOTYPE

SHEET DESCRIPTION: SOUTH AND EAST ELEVATIONS

SHEET NUMBER: A3.01

NOT FOR CONSTRUCTION