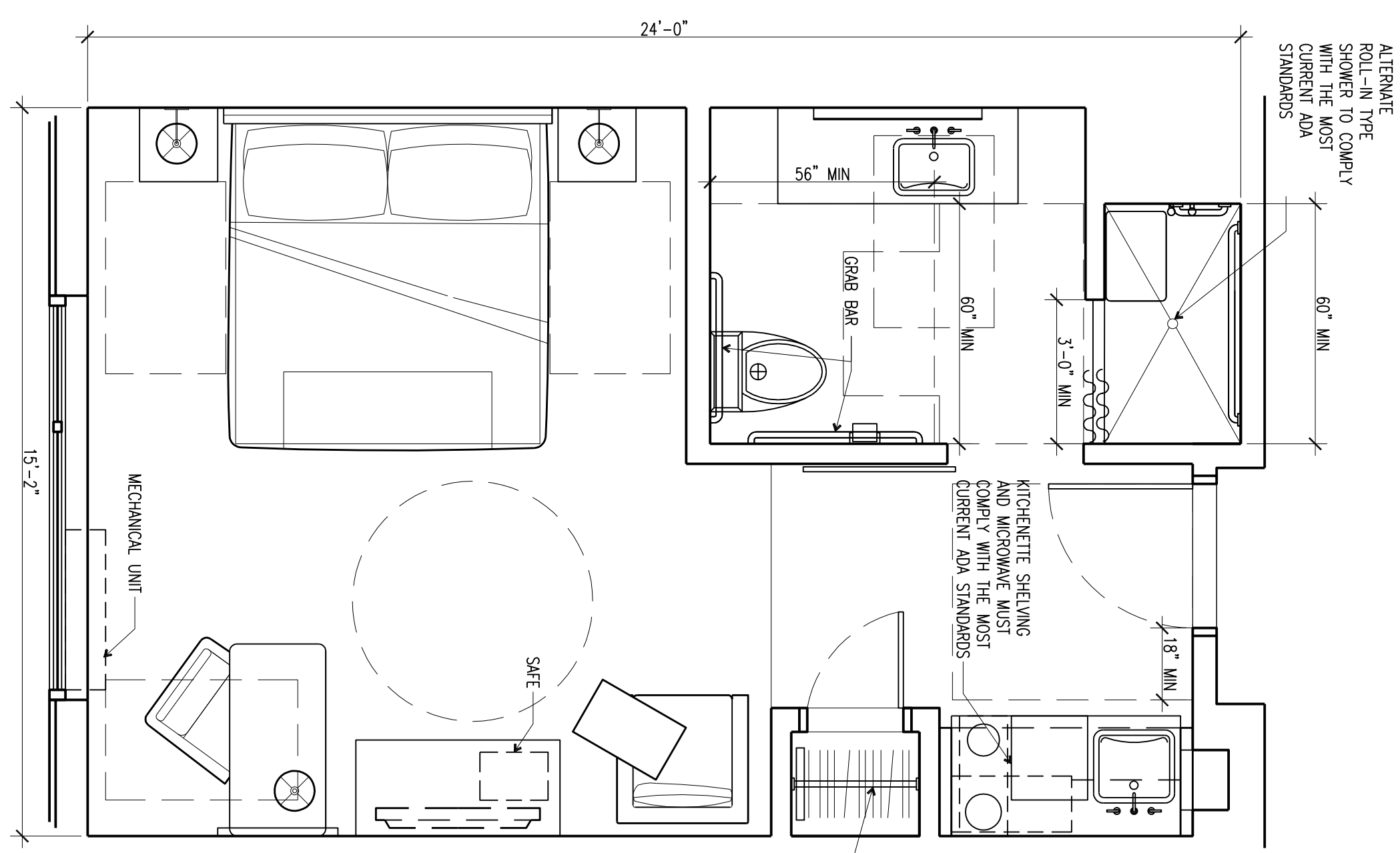
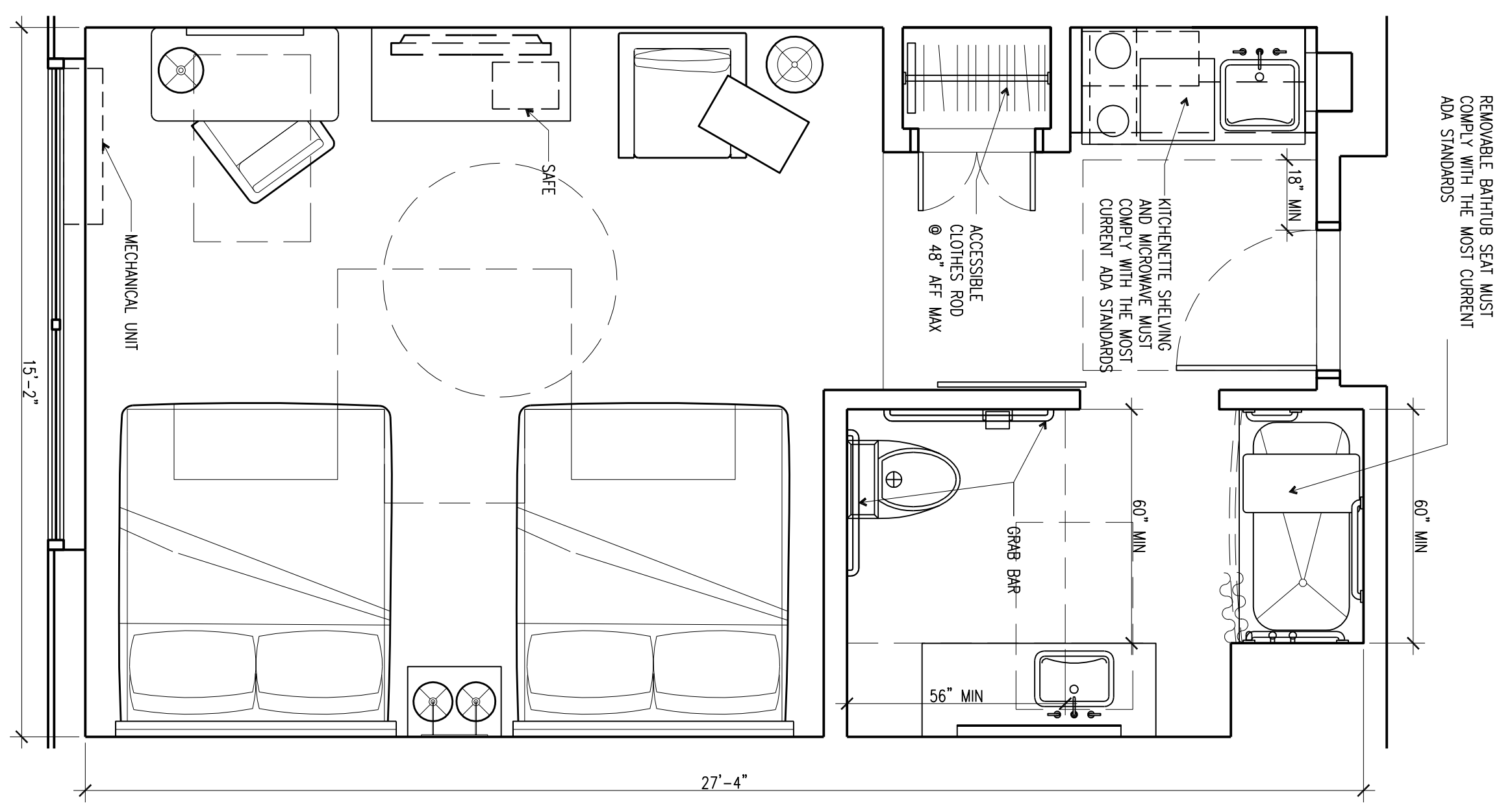


ACCESSIBLE ROOM CONFIGURATION

SCALE 1/16"=1'-0"
3



ACCESSIBLE Q/Q ES STUDIO PLAN

SCALE 3/8"=1'-0"
2

ACCESSIBLE KING ES STUDIO PLAN

SCALE 3/8"=1'-0"
1

NOT FOR CONSTRUCTION

SHEET NUMBER:
ID9.07

PROJECT NAME:
BEST WESTERN EXECUTIVE RESIDENCY PROTOTYPE

DATE:
JANUARY 2016

SHEET DESCRIPTION:
ACCESSIBLE ES KING STUDIO AND ES Q/Q STUDIO PLANS

RESPONSIBILITIES:
YOU EXPRESSLY UNDERSTAND AND AGREE THAT YOUR USE OF AND RELIANCE ON THESE ARCHITECTURAL DRAWINGS OR SPECIFICATIONS PROVIDED BY BEST WESTERN INTERNATIONAL, INC. ("BWI") IS AT YOUR SOLE RISK AND IS MADE AVAILABLE ON AN "AS IS" AND "AS AVAILABLE" BASIS. YOU HEREBY RELEASE, WARRANTS, OR GUARANTEES WITH REGARD TO THE APPROPRIATENESS, ACCURACY, SUFFICIENCY, CORRECTNESS, RELIABILITY, COMPLETENESS, OR TIMELINESS OF ANY INFORMATION OR CONTENT, INCLUDING WITHOUT LIMITATION COMPLIANCE WITH THE AMERICANS WITH DISABILITIES ACT, FEDERAL, STATE OR CODE, OR ASSOCIATION FOR ANY SPECIFIC OR INTENDED PURPOSE. BWI EXPRESSLY DISCLAIMS ALL WARRANTIES OF ANY KIND, WHETHER EXPRESS OR IMPLIED, INCLUDING WARRANTIES OF MERCHANTABILITY, FITNESS FOR A PARTICULAR PURPOSE AND NON-INFRINGEMENT.

YOU AND YOUR CONTRACTORS SHALL BE LIABLE FOR ANY DIRECT, INDIRECT, PUNITIVE, INCIDENTAL, SPECIAL, CONSEQUENTIAL DAMAGES OR ANY DAMAGES WHATSOEVER, INCLUDING DAMAGES FOR LOSS OF USE, DATA, OR PROFITS, ARISING OUT OF OR IN ANY WAY CONNECTED WITH THE USE OR PERFORMANCE OF ANY BIM PROVIDED HEREON, INCLUDING THE USE OF THE BIM PLANS OR SPECIFICATIONS, IN WHOLE OR IN PART, WHETHER BASED ON CONTRACT, TORT, NEGLIGENCE, STRICT LIABILITY OR OTHERWISE, EVEN IF YOU HAVE BEEN ADVISED OF THE POSSIBILITY OF SUCH DAMAGES. ALL USE OF THE PLANS AND/OR SPECIFICATIONS IS DONE AT YOUR OWN DISCRETION AND RISK AND YOU WILL BE SOLELY RESPONSIBLE FOR ANY DAMAGE THAT RESULTS THEREFROM.

IF YOU ARE DISSATISFIED WITH ANY PORTION OF THE BIM PLANS AND/OR SPECIFICATIONS, OR WITH ANY OF THESE EXCLUSIONS, YOU MUST NOTIFY THE ARCHITECT IMMEDIATELY IN WRITING USING SUCH PLANS AND SPECIFICATIONS. YOU ARE SOLELY RESPONSIBLE FOR DETERMINING THE ADEQUACY AND SPECIFICATION FOR YOUR PARTICULAR NEEDS. YOU ARE HEREBY ENCOURAGED BY BWI TO CONSULT WITH THE APPROPRIATE PROFESSIONAL ADVISORS OF YOUR CHOICE TO DETERMINE THE APPLICABLE LAWS FOR ANY SUCH PLANS AND/OR SPECIFICATIONS.