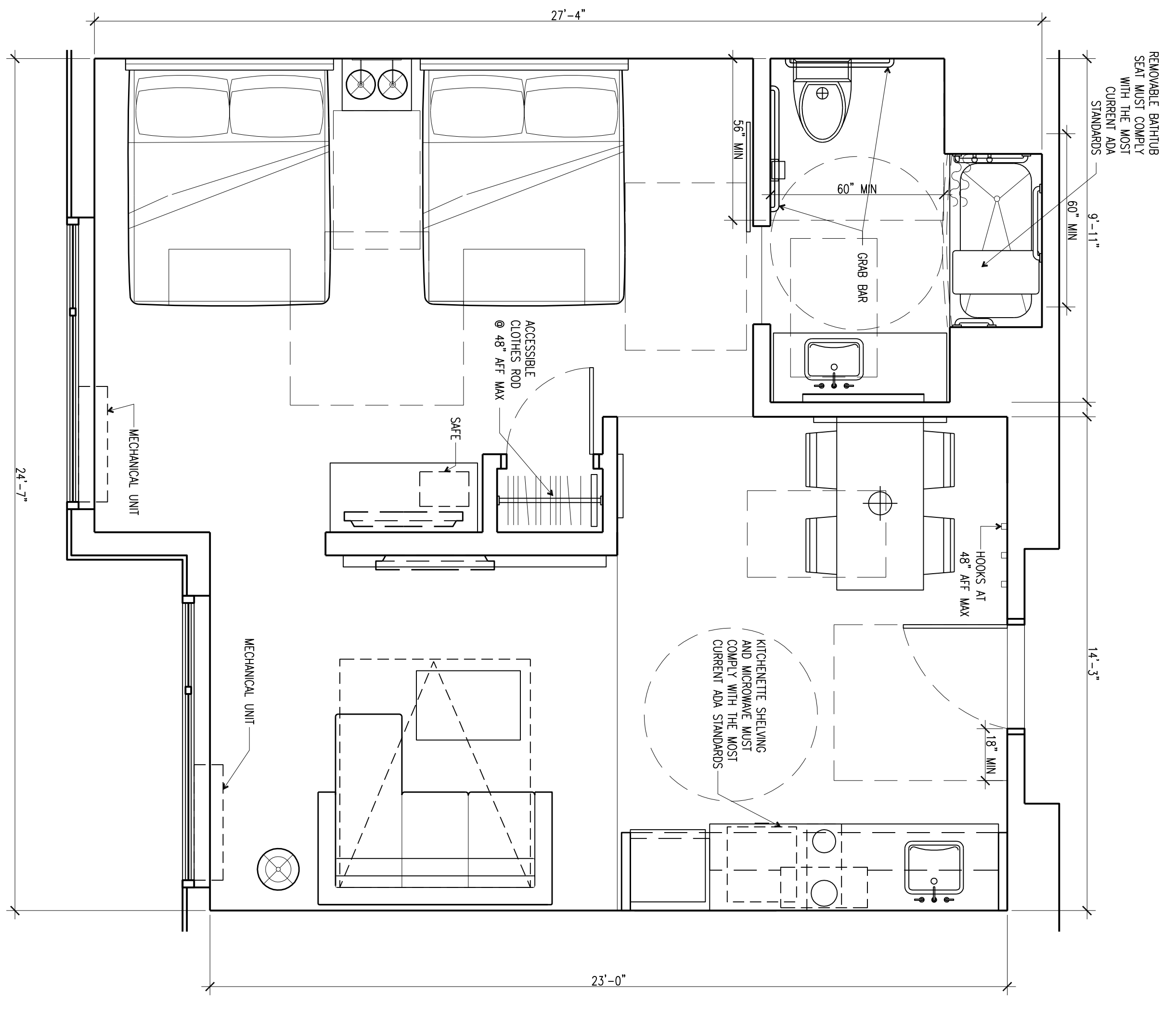


ACCESSIBLE ROOM CONFIGURATION

SCALE
1/16"=1'-0"

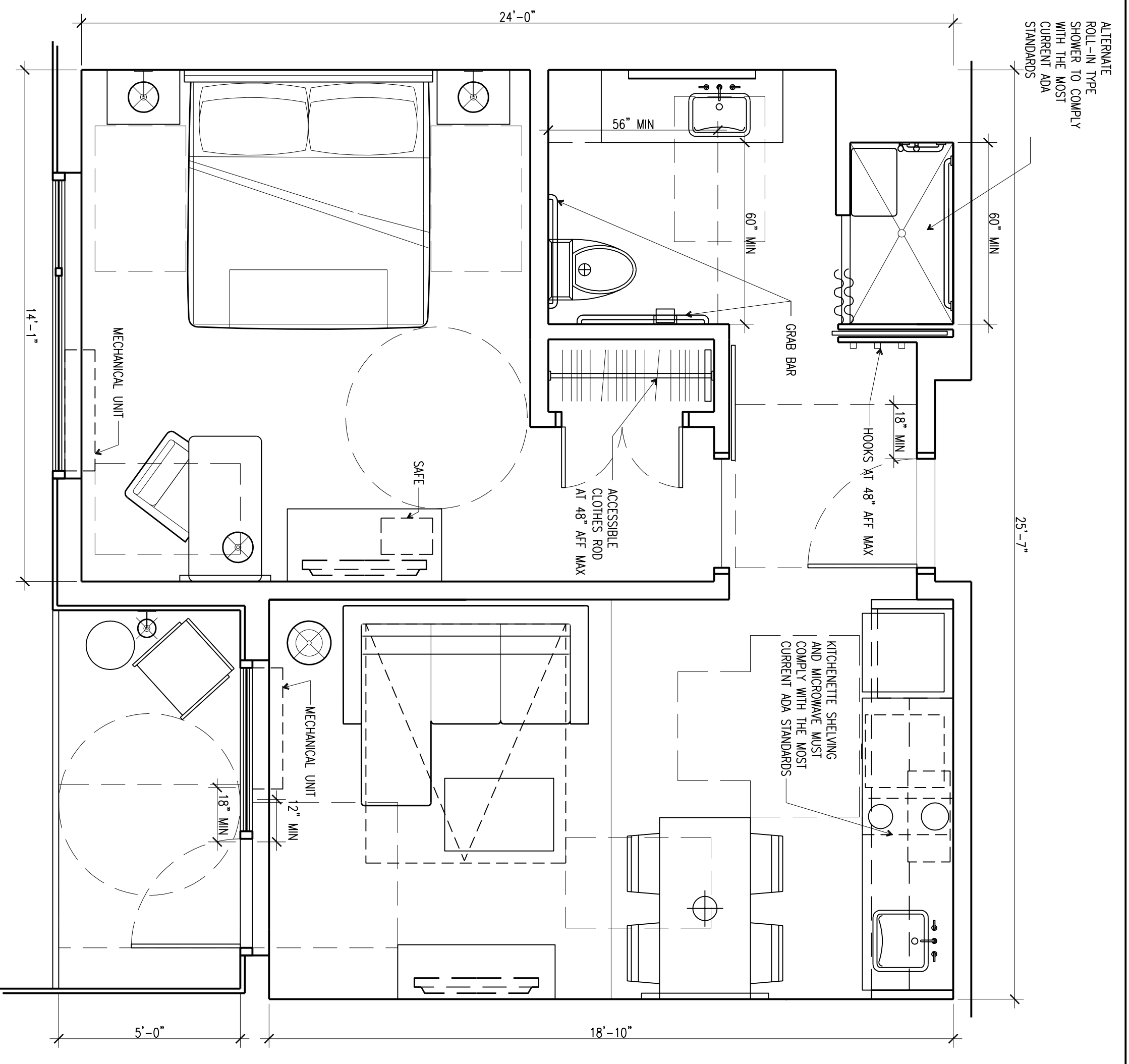
3



ACCESSIBLE Q/Q ES TYPE 2 PLAN

SCALE
3/8"=1'-0"

2



ACCESSIBLE KING ES TYPE 1 PLAN

SCALE
3/8"=1'-0"

1

RESPONSIBILITIES:
YOU EXPRESS, UNDERSTAND AND AGREE THAT YOUR USE OF AND DEPENDENCE ON THE SERVICES AND FACILITIES PROVIDED BY BEST WESTERN INTERNATIONAL, INC. ("BWI") IS AT YOUR SOLE RISK AND IS MADE AVAILABLE ON AN "AS IS" AND "AS IS" BASIS. YOU HEREBY RELEASE, DEFEND, INDEMNIFY AND HOLD HARMLESS, WITHOUT LIMITATION, BEST WESTERN INTERNATIONAL, INC. AND ITS AFFILIATED COMPANIES, FROM AND AGAINST ALL CLAIMS, DAMAGES, LOSSES AND EXPENSES, INCLUDING REASONABLE ATTORNEY'S FEES, ARISING OUT OF OR IN ANY WAY CONNECTED WITH THE USE OR PERFORMANCE OF ANY BVI PROVIDED OR PROVIDED FOR BY YOU, OR ANY PART OF THE BVI PLANS OR SPECIFICATIONS, IN WHOLE OR IN PART, WHETHER BASED ON CONTRACT, TORT, NEGLIGENCE, STRICT LIABILITY OR OTHERWISE, EVEN IF YOU HAVE BEEN ADVISED OF THE POSSIBILITY OF SUCH DAMAGES. ALL USE OF THE PLANS AND/OR SPECIFICATIONS IS DONE AT YOUR OWN DISCRETION AND RISK AND YOU WILL BE SOLELY RESPONSIBLE FOR ANY DAMAGES THAT RESULT THEREFROM. IF YOU ARE DISSATISFIED WITH ANY PORTION OF THE BVI PLANS AND/OR SPECIFICATIONS, OR WITH ANY OF THESE EXCLUSIONS, PLEASE CONTACT THE ARCHITECT IMMEDIATELY TO DISCUSS YOUR CONCERNS. YOU ARE SOLELY RESPONSIBLE FOR DETERMINING THE ADEQUACY AND SPECIFICATION FOR YOUR PARTICULAR NEEDS. YOU ARE HEREBY ENCOURAGED BY BVI TO CONSULT WITH THE APPROPRIATE PROFESSIONAL ADVISORS OF YOUR CHOICE TO DETERMINE THE ADEQUACY AND SPECIFICATION FOR YOUR PARTICULAR NEEDS AND/OR SPECIFICATIONS. YOU WILL BE SOLELY RESPONSIBLE FOR ANY DAMAGES THAT RESULT THEREFROM.

SHEET DESCRIPTION:
ACCESSIBLE ES KING TYPE 1
AND ES Q/Q TYPE 2 PLANS

DATE:
JANUARY 2016

PROJECT NAME:
BEST WESTERN
EXECUTIVE
RESIDENCY
PROTOTYPE

SHEET NUMBER:
109.08

NOT FOR CONSTRUCTION